

Element Oilfield Technologies

Product List



Element Management Group

Kristopher Langille – President and CEO of Element - has over 25 years of downhole tools experience. Former founder of Nighthawk Energy Services, a downhole tool company that over 10 years was the fastest growing company of its time was acquired by Tercel Oilfield Services in 2013. For 3 years following the acquisition, Kris acted as Managing Director for the downhole tools line for Tercel worldwide until his exit in 2016. In early 2017 Kris formed Element Oilfield Technologies Inc.

Steven Nordhagen – Engineering Manager and Partner - has over 30 years of experience with downhole tools designing & implementing some of the very robust downhole in industry. Steve started his career working with Baker Hughes, and later for such companies as Bico Faster and Nordstef consulting. Through the years of his experience, he joined Element in 2018 and began designing the Element product lines with the management team.

Kory Simpson – COO and VP of Operations – with over 25 years of experience, Kory brings his experience from working with past companies such as Blackmax Downhole tools and Schlumberger. Kory brings a high level of expertise implementing SAP's, QA and QC procedures as well as his wealth of knowledge of working with domestic and International customers.

Jayant Puri – International Business – has over 30 years of oil field experience at senior positions with multi national companies working in different geographies. Jayant also worked with Nighthawk, building company's international markets, and was a key asset in the growth and strategies for Nighthawk's successes.

Current Products

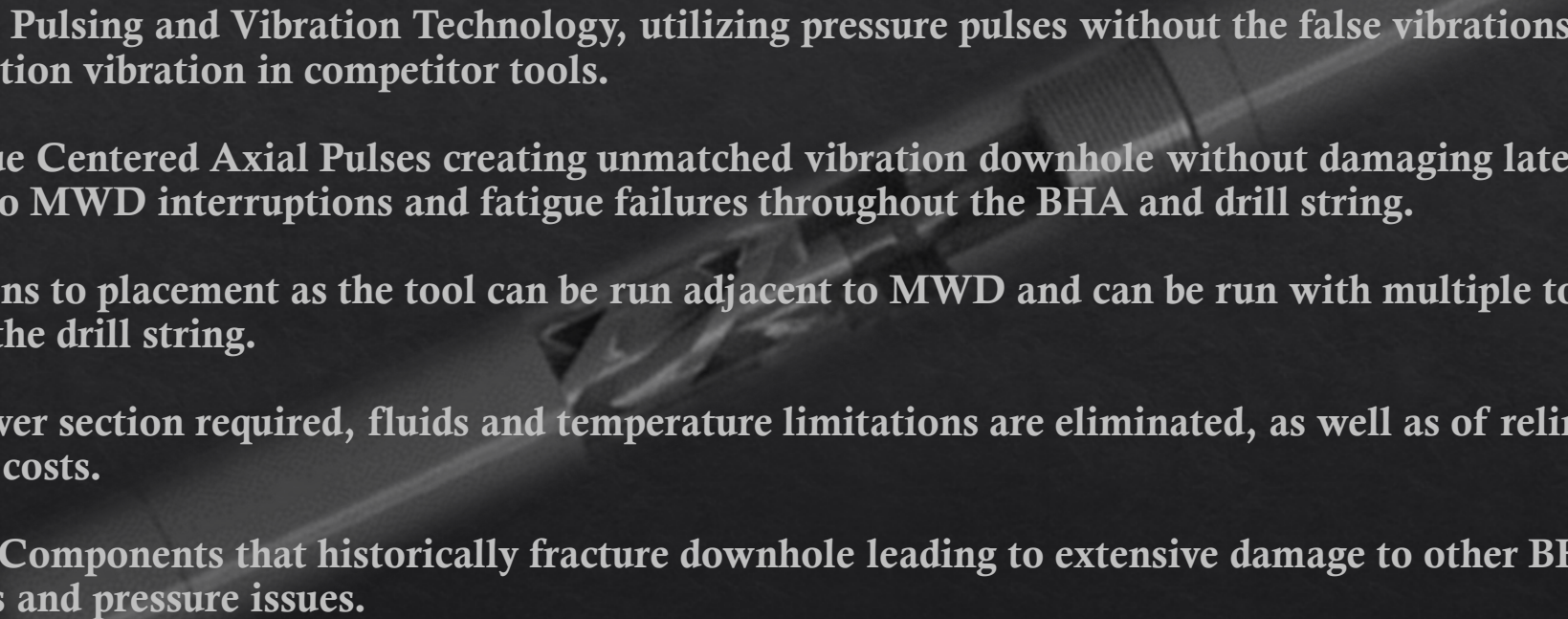
- ◇ Drilling Motors – Sealed and Mud Lube Bearing
- ◇ Centerfire Vibration System
- ◇ Advance Compression System
- ◇ Torsional Loading Shock Tool
- ◇ Pulse Enhancement Tools
- ◇ Circulation / Jetting Sub
- ◇ Drilling and Fishing Jars – All types
- ◇ Drilling Jar Accelerators – All types
- ◇ VRT Tools (Shock tools)
- ◇ Roller Reamers – Slant and Straight Blade Reamers
- ◇ Fixed Blade PDC Replaceable Reamers
- ◇ Fishing Tools and Milling Equipment
- ◇ Cutting Bed Reamers
- ◇ Key Seat Wipers
- ◇ Stabilizers – All types
- ◇ Additional Element Products
- ◇ Purchasing and Procurement Services
- ◇ 3rd Parts Products Represented
- ◇ Preliminary R and D Products

Element EV-6 Drilling Motors



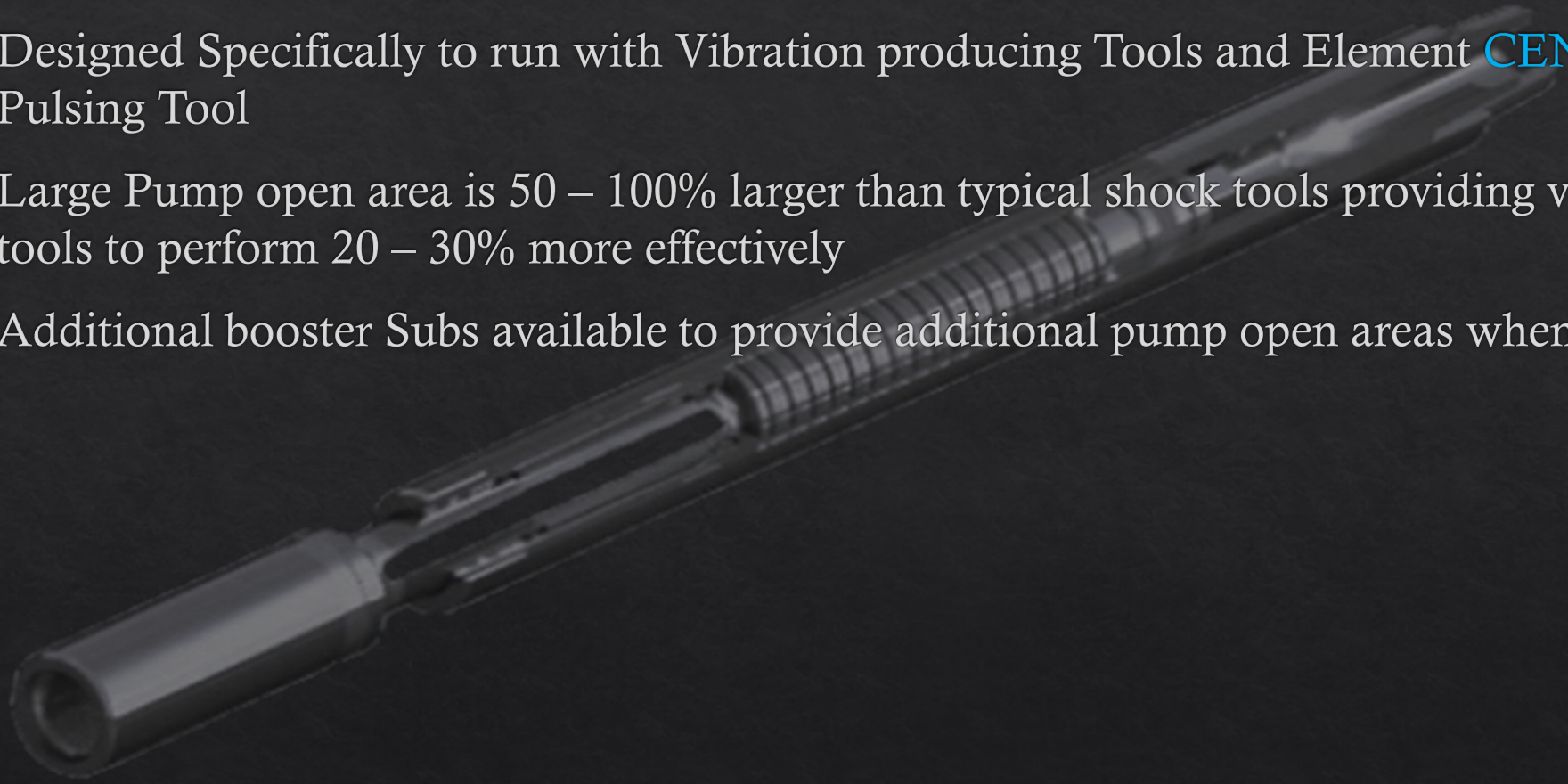
- ◇ Available in Sizes from 1 11/16" to 1 1/4"
- ◇ Designs in both Sealed Bearing and Mud Lube Bearing designs
- ◇ Designs for RSS Assist Applications
- ◇ Available in Adjustable, Fixed Bend and Straight Housings
- ◇ Can be utilized in Thru-Tubing, Coiled Tubing, All Directional / Horizontal and Mining Applications
- ◇ Available in Conventional Ball Style Shaft and HD Flex Shaft options
- ◇ Can be modified, designed customer specific
- ◇ Segments of designs can be implemented into customer current assets to improve on designs and reliability etc.
- ◇ New age designs in diameters of 5 1/4", 5 3/4", 7 1/4", 7 3/4" and 8 1/4"

Element **CENTERFIRE** Pulsing Tool

- **Next Step in Pulsing and Vibration Technology, utilizing pressure pulses without the false vibrations attributed to power section vibration in competitor tools.**
 - **Features True Centered Axial Pulses creating unmatched vibration downhole without damaging lateral effects which lead to MWD interruptions and fatigue failures throughout the BHA and drill string.**
 - **No limitations to placement as the tool can be run adjacent to MWD and can be run with multiple tools throughout the drill string.**
 - **With no power section required, fluids and temperature limitations are eliminated, as well as of relining and high service costs.**
 - **No Carbide Components that historically fracture downhole leading to extensive damage to other BHA Components and pressure issues.**
- 

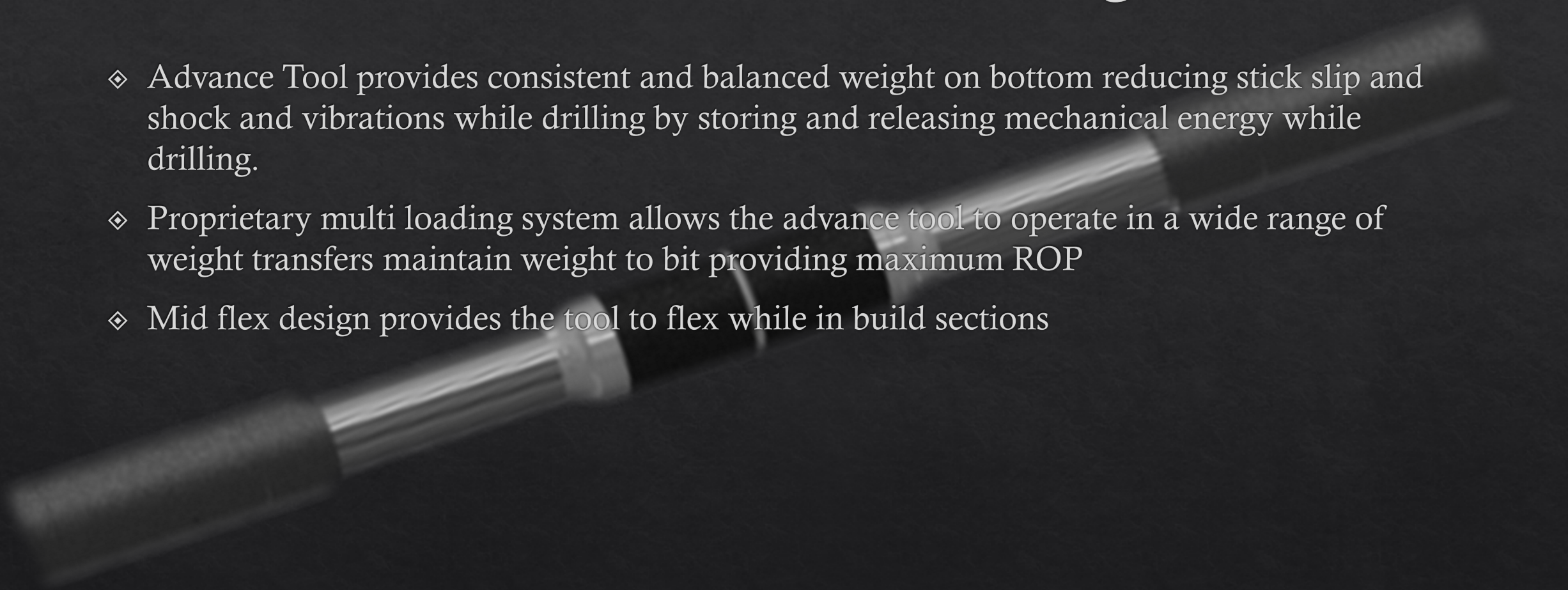
Element Vibration Enhancement Shock Tool

- ◆ Designed Specifically to run with Vibration producing Tools and Element **CENTERFIRE** Pulsing Tool
- ◆ Large Pump open area is 50 – 100% larger than typical shock tools providing vibration tools to perform 20 – 30% more effectively
- ◆ Additional booster Subs available to provide additional pump open areas when required



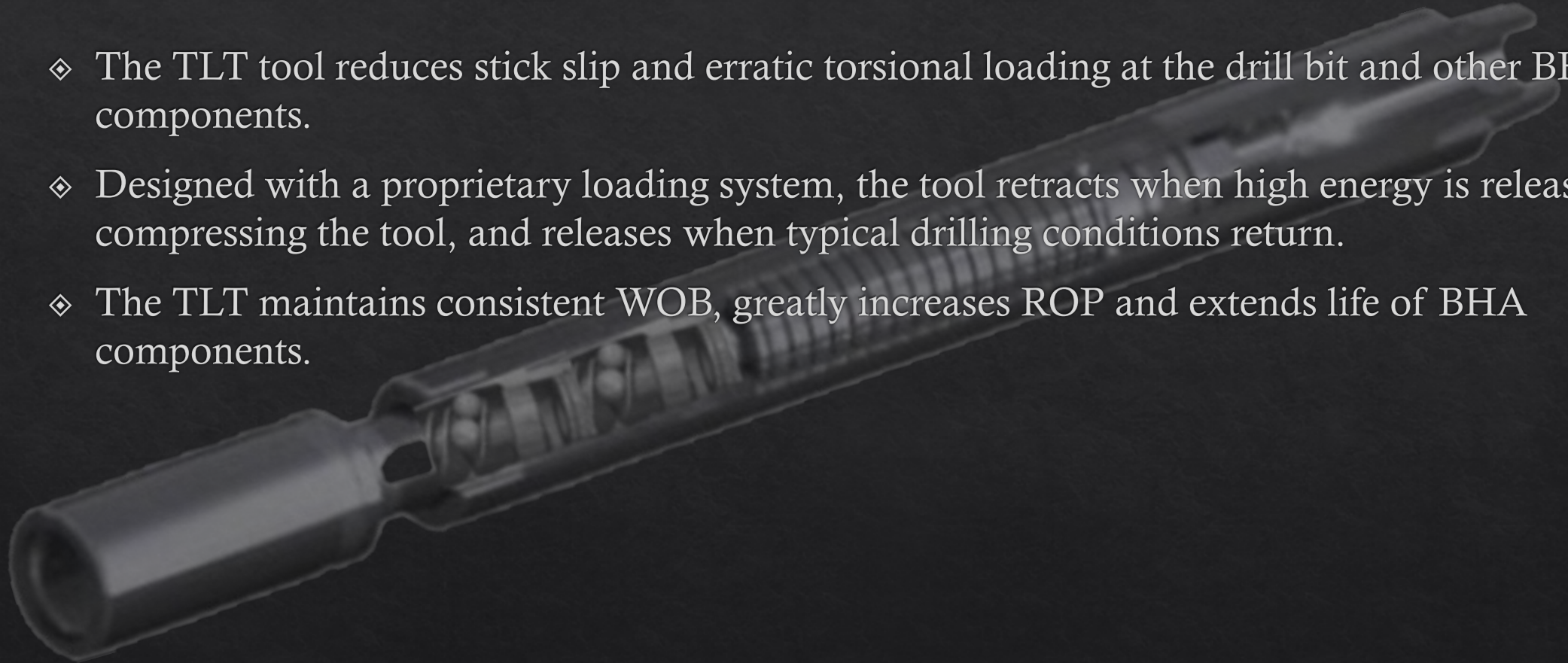
Element **ADVANCE** Drilling Tool

- ◆ Advance Tool provides consistent and balanced weight on bottom reducing stick slip and shock and vibrations while drilling by storing and releasing mechanical energy while drilling.
- ◆ Proprietary multi loading system allows the advance tool to operate in a wide range of weight transfers maintain weight to bit providing maximum ROP
- ◆ Mid flex design provides the tool to flex while in build sections



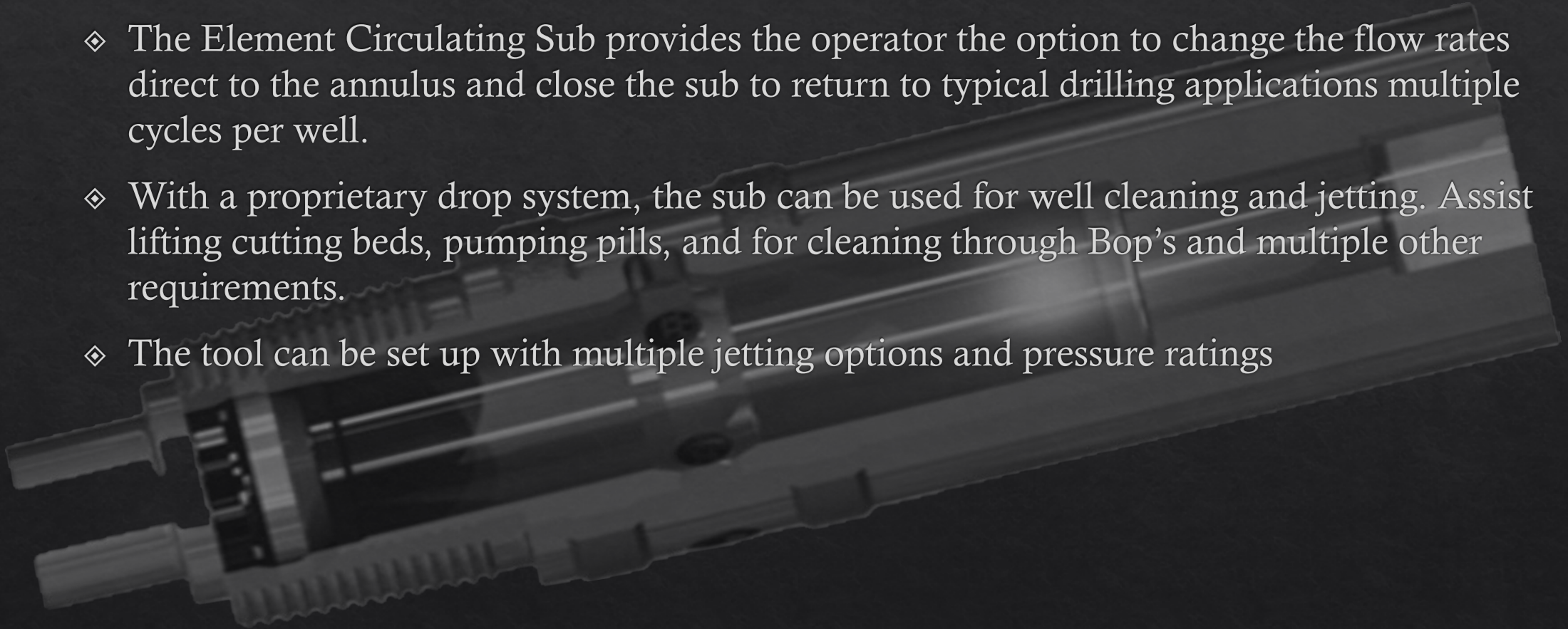
Element Torsional Loading Shock Tool

- ◆ The TLT tool reduces stick slip and erratic torsional loading at the drill bit and other BHA components.
- ◆ Designed with a proprietary loading system, the tool retracts when high energy is released compressing the tool, and releases when typical drilling conditions return.
- ◆ The TLT maintains consistent WOB, greatly increases ROP and extends life of BHA components.



Element Circulation Sub

- ◆ The Element Circulating Sub provides the operator the option to change the flow rates direct to the annulus and close the sub to return to typical drilling applications multiple cycles per well.
- ◆ With a proprietary drop system, the sub can be used for well cleaning and jetting. Assist lifting cutting beds, pumping pills, and for cleaning through Bop's and multiple other requirements.
- ◆ The tool can be set up with multiple jetting options and pressure ratings



Element Jars and Accelerators

- ◆ Available in Straight Hydraulic, Straight Mechanical, Hydraulic Mechanical and Double Acting Designs
- ◆ Drilling Jar Accelerators can be run with both Element and competitor drilling jars enhancing jarring impacts in both single and double acting designs
- ◆ Fishing and coiled tubing jars available in diameters from 1 11/16" to 8"
- ◆ Available for Hot Hole Applications
- ◆ Carbide internal and external coatings

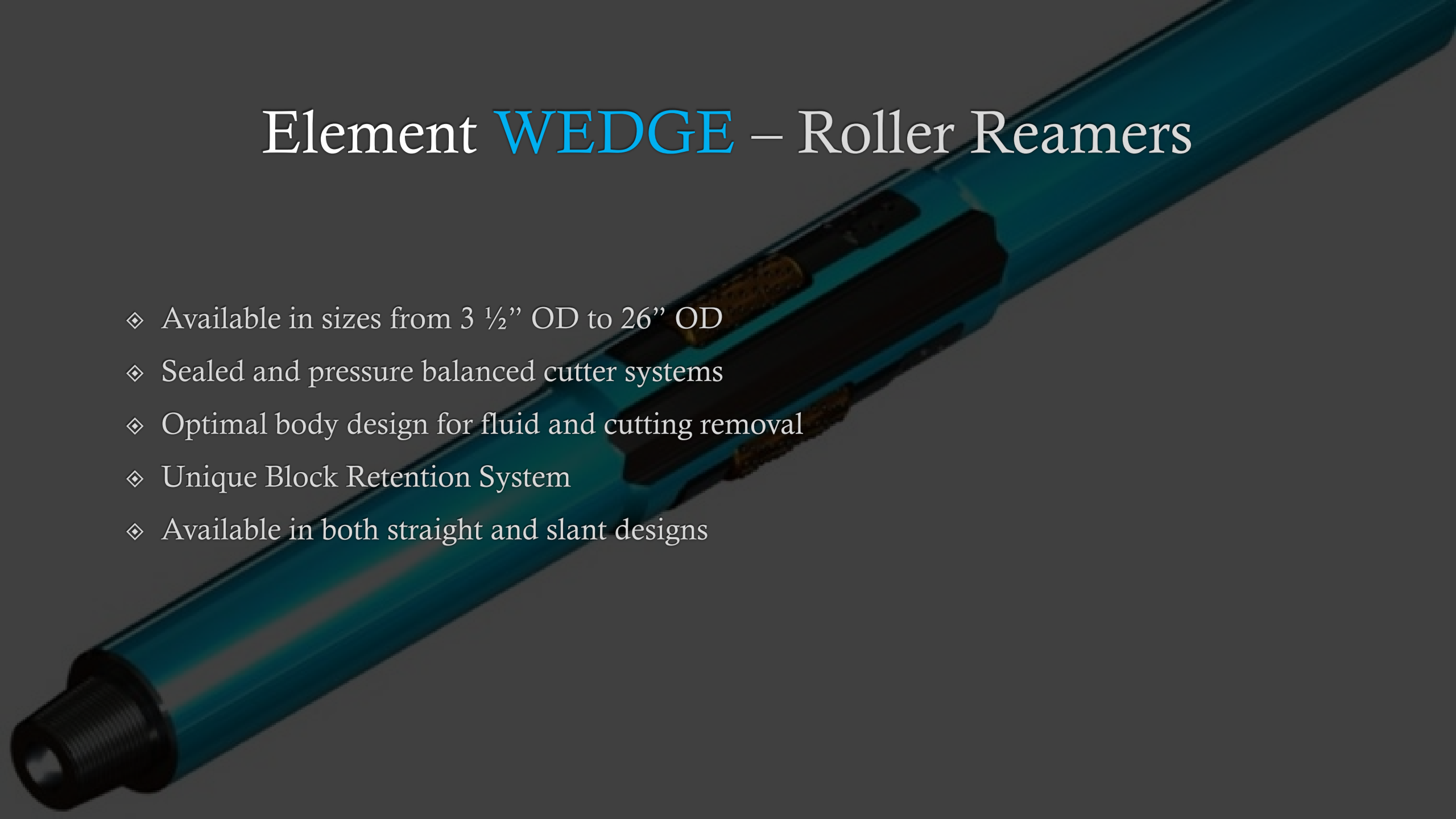


Element **VRT** (Shock Tools)

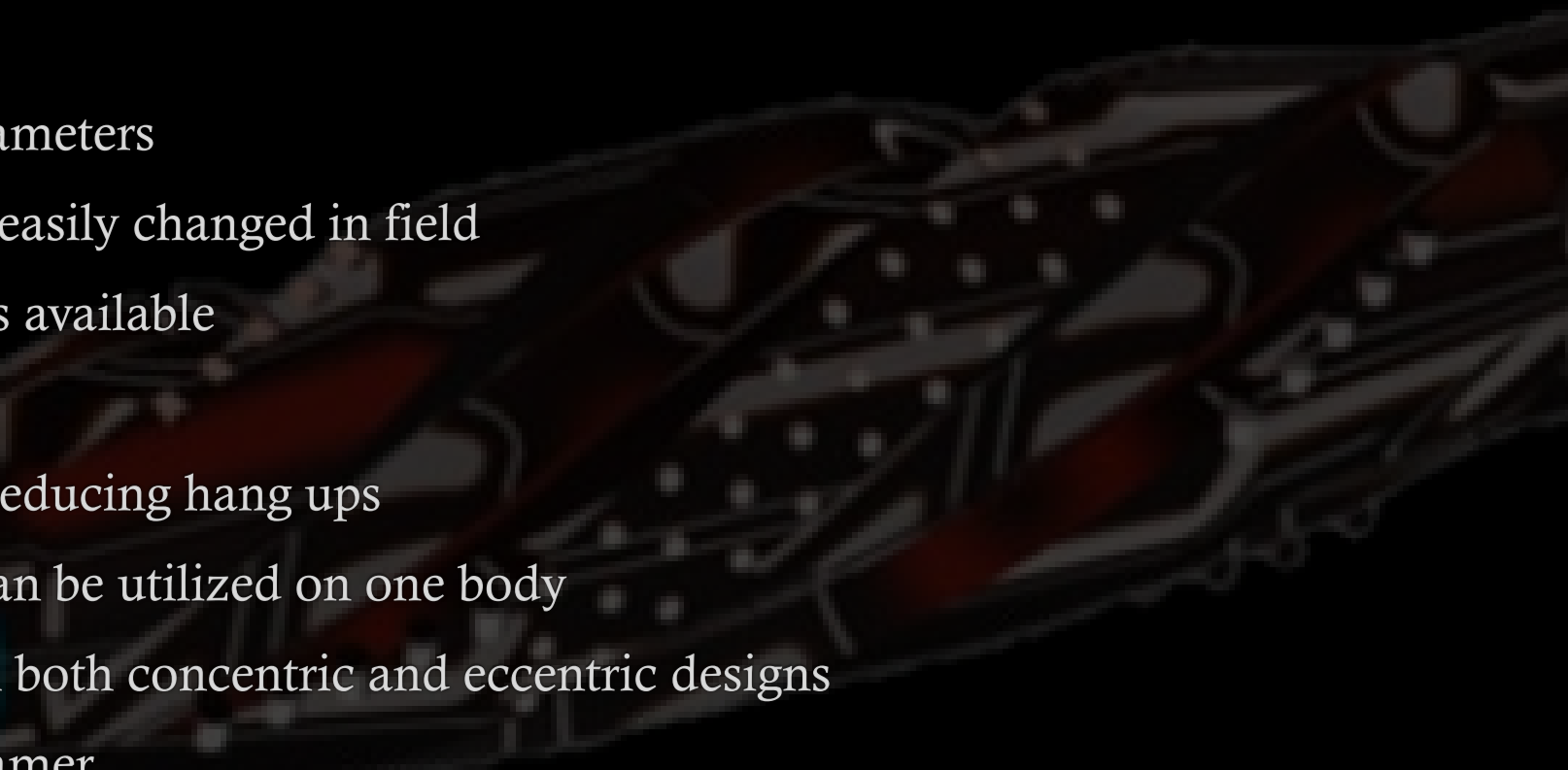
- ◆ Available in all sizes
- ◆ Designs specific for running with Vibration enhancement tools (Agitator etc.)
- ◆ Can be set up to run in all weight variations
- ◆ Operates in both tension and compression
- ◆ Pressure Balanced
- ◆ Carbide Internal and External Coatings
- ◆ MWD Shock Tools available

Element **WEDGE** – Roller Reamers

- ◆ Available in sizes from 3 ½” OD to 26” OD
- ◆ Sealed and pressure balanced cutter systems
- ◆ Optimal body design for fluid and cutting removal
- ◆ Unique Block Retention System
- ◆ Available in both straight and slant designs

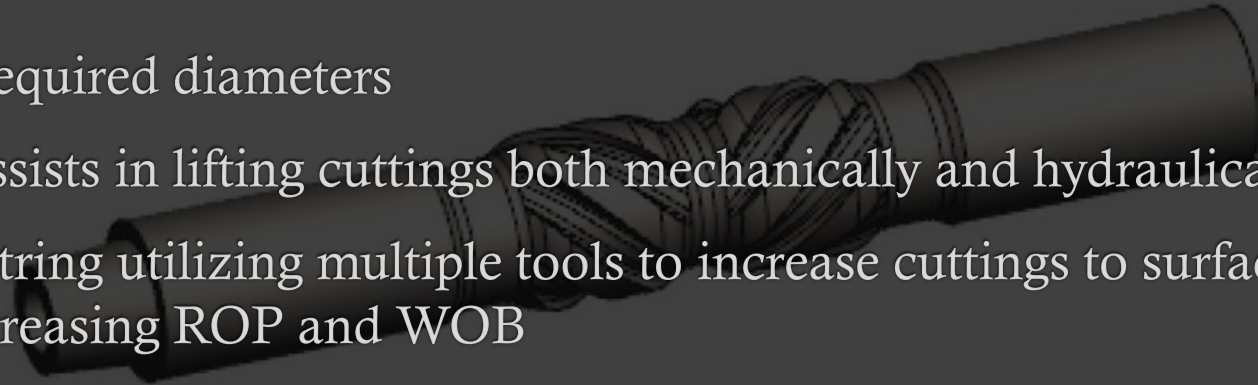


Element SWITCHBLADE Fixed Cutter Reamer

- ◆ Available in all required diameters
 - ◆ Unique Replaceable Blade easily changed in field
 - ◆ PDC Cutters or TCI Inserts available
 - ◆ Reams in both directions
 - ◆ Low profile leading edges reducing hang ups
 - ◆ Multiple blade diameters can be utilized on one body
 - ◆ Cutting Blades available in both concentric and eccentric designs
 - ◆ Can be used as an underreamer
- 

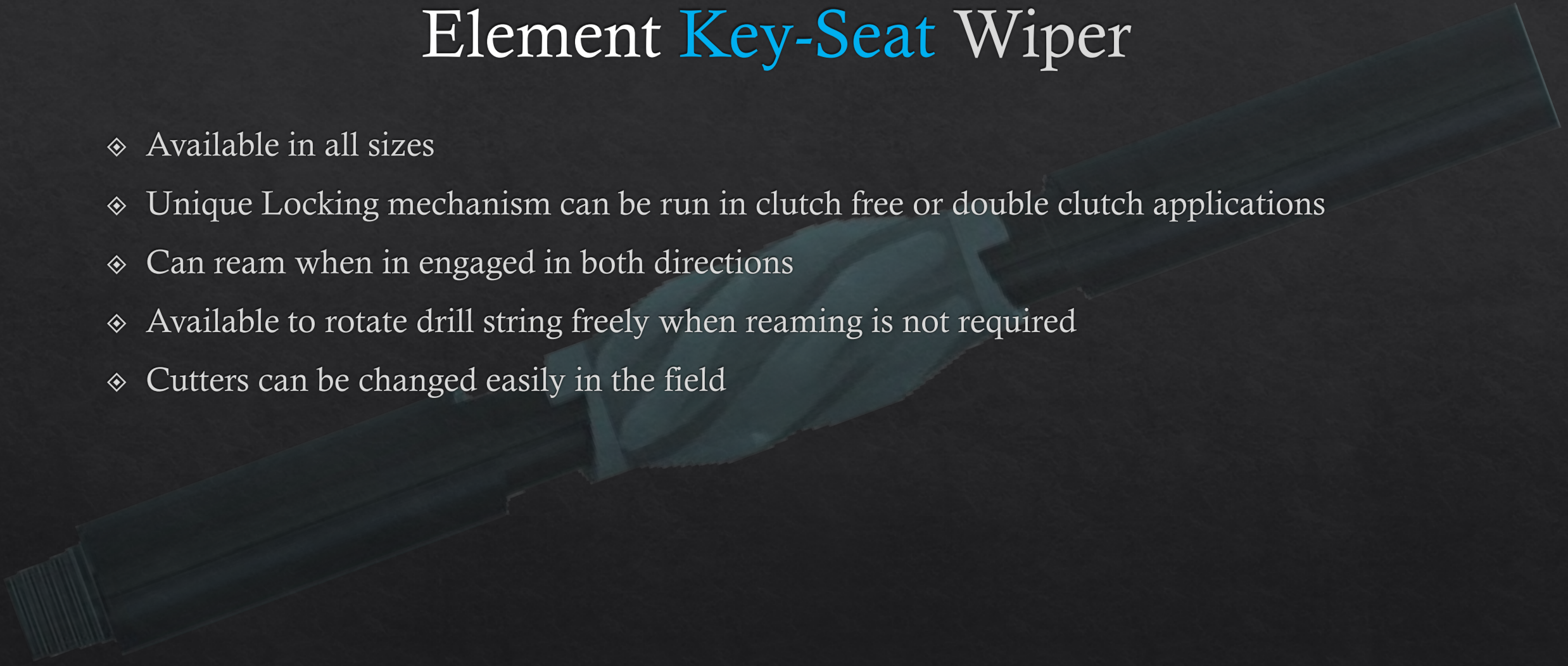
Element **ELEVATE** Cutting bed Reamer

- ◆ Available in all required diameters
- ◆ Unique design assists in lifting cuttings both mechanically and hydraulically
- ◆ Run in the drill string utilizing multiple tools to increase cuttings to surface reducing torque and drag and increasing ROP and WOB
- ◆ Optimal blade fluting creates hydraulic whirl bi-directional lifting cuttings
- ◆ Bi-directional cutting surface lift cutting mechanically while rotating



Element **Key-Seat** Wiper

- ◆ Available in all sizes
- ◆ Unique Locking mechanism can be run in clutch free or double clutch applications
- ◆ Can ream when in engaged in both directions
- ◆ Available to rotate drill string freely when reaming is not required
- ◆ Cutters can be changed easily in the field



Element Fishing Tools and Milling Equipment

The image shows three vertical drill pipe assemblies against a dark background. Each assembly consists of a long, dark blue cylindrical pipe. The bottom of each pipe is equipped with a different type of bottom hole assembly (BHA). The leftmost assembly has a BHA with a series of small, pointed teeth. The middle assembly has a BHA with a series of larger, more complex teeth. The rightmost assembly has a BHA with a series of even larger, more complex teeth. The text is overlaid on the left side of the image.

Fishing tools

- ◇ Bumper Subs
- ◇ Fishing Jars
- ◇ Over shots
- ◇ Casing Scrappers & Cutters
- ◇ Wash-over items
- ◇ Taper Taps & Die Collars

Milling Tools

- ◇ Junk mills (Flat Bottom, Bladed, Star Type, etc.)
- ◇ End mills
- ◇ Tapered mills
- ◇ Pilot Mills

Additional **Element** Products



- ◆ Filter Subs and Screens
- ◆ Crossover Subs, Saver Subs
- ◆ Stabilizers
- ◆ Hole Openers
- ◆ Non mag Drill Collars and Non mag components
- ◆ Power Sections
- ◆ Service shop Accessories and Products

Element Purchasing and Procurement

- ◆ Element Provides Purchasing and Procurement using qualified vendors for specific products and certifications
- ◆ Contractual supply of inventory levels and stock and draw equipment for high turn items
- ◆ Regional Representation of Licensed products and premium set equipment

Element 3rd Party Products Represented

- ◆ 3rd Party products are sold by Element to customers through strong working relationships and reputable suppliers
- ◆ Mwd Systems and Equipment
- ◆ Premium Sand Screens
- ◆ Drill pipe, Drill Collars, Casing and seamless pipe
- ◆ Cementing and production equipment
- ◆ Coiled Tubing equipment
- ◆ Valves and fittings
- ◆ Manufacturing of customer parts and equipment
- ◆ Raw Material